

世纪高通简介 COMPANY PROFILE

世纪高通成立于2005年，作为四维图新[002405]旗下专业位置大数据服务商，专注挖掘位置生态数据价值，形成多场景化解决方案，成就智慧城市愿景。

世纪高通作为国内专业的交通信息数据服务商，通过高品质路况服务覆盖中国全境360+城市及港澳台地区，其中车规级城市覆盖达到150+，同时支持TPEG、TMC和RTIC等全球多种技术标准。

公司基于自身海量、多源的位置大数据仓库，构建面向公共安全、智慧交通、智慧交警、智慧城市、金融保险、互联网等多场景化的行业解决方案，助力政企、金融、互联网等客户打造智慧大脑，构建数字孪生城市基座，实现智慧愿景。目前，数据日均处理量超4.2TB，总存储容量达6.96PB+，助力全国超过三百家以上的客户实现数据生态价值。

Cennavi, founded in 2005, as a professional location big data provider owned by NavInfo [002405], focuses on extracting the value of location ecological data, forming multi-scene solutions, and achieving the vision of smart city.

As a professional traffic information data provider in China, Cennavi covers more than 360 cities in China and Hong Kong, Macao and Taiwan regions through high-quality road condition services, including more than 150 vehicle regulation level cities, and supports TPEG, TMC, RTIC and other global technical standards.

Based on massive and multi-source location big data warehouse, the company builds multi-scene industrial solutions for public security, intelligent transportation, intelligent traffic police, smart city, financial insurance, Internet, etc., and helps the government, enterprises, finance, Internet and other customers to create smart brains, build digital twin city base and realize the intelligence vision. At present, the daily average processing capacity of data exceeds 4.2 TB, and the total storage capacity reaches over 6.96 TB, which helps more than 300 customers realize the ecological value of data.

世纪高通产品手册

CENNAVI PRODUCT MANUALS

孪生城市的数字化感知基座
DIGITAL PERCEPTION BASE OF TWIN CITIES



世纪高通微信视频号
Video Number



世纪高通微信公众号
Official Account

400-650-0295

www.cennavi.com.cn

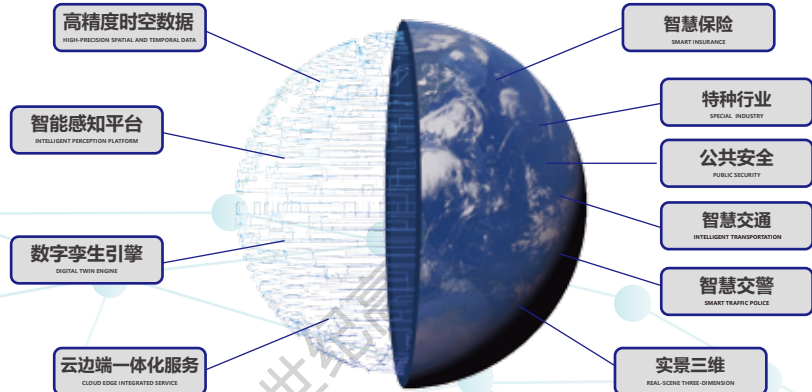
cennavi_marketing@cennavi.com.cn

MineData 位置大数据平台

MineData Location Big Data Platform

MineData @Earth 汇聚四维图新位置数据资产、LBS服务能力，对物理世界的人、车、路、城市基建、环境实况等主体进行精准刻画，以智能、融合、感知激发数据价值，实现时间、空间上的历史回溯、实时查看、未来预测，主要服务于公安、交通、交警、保险、金融、互联网、运营商等行业客户。

MineData @Earth converges location data assets and LBS service ability of Navinfo, depicts the physical world of people, cars, roads, urban infrastructure, environment and other subjects, and stimulates the data value with intelligence, integration and perception, accurately realizes historical backtracking, real-time viewing and future prediction across time and space, and mainly serves customers in public security, transportation, traffic police, insurance, finance, Internet, operators and other industries.



数据总量 **6.96 PB+**
TOTAL DATA VOLUME: 6.96 PB+

日增 **4.2 TB+**
DAILY INCREASE: 4.2 TB+

覆盖路网 **820 万公里+**
ROAD NETWORK COVERAGE: 8.20 MILLION KM+

核心POI **3000 万+**
CORE POI: 30 MILLION+



动态交通信息数据
Dynamic traffic information data



高精度地图数据
High-precision map data



1:2000数据
Scenario of data with a scale of 1:2000



三维城市数据图
Three-dimensional urban data map



卫星影像数据
Satellite image data



DEM数据
DEM

行业解决方案

INDUSTRY SOLUTIONS

智慧保险

SMART INSURANCE

为基础GIS能力构建、自然灾害管理、车险理赔运营创新、农险精细化管理提供数据及服务支撑。

Provide data and service support for the construction of basic GIS capability, natural disaster management, innovation of auto insurance claim operation, and refined management of agricultural insurance.

特种行业

SPECIAL INDUSTRY

打造多源数据+指挥推演+可视化的数字地球综合解决方案，涵盖电子沙盘、特种场景导航、动态标绘和态势表达等。

Build a comprehensive digital earth solution of multi-source data + command deduction + visualization, covering electronic sand table, special scene navigation, dynamic plotting and situation expression, etc.

公共安全

PUBLIC SECURITY

警用地理信息 (PGIS) 平台
POLICE GEOGRAPHIC INFORMATION SYSTEM (PGIS) PLATFORM

面向省/市公安局提供地理数据+门户平台为一体的标准化产品，符合公安部PGIS2.0标准方向。

PGIS platform is a standardized product which provides geographic data and portal platform for provincial/municipal public security customers. The platform conforms to the PGIS2.0 standard direction of the Ministry of Public Security.

标准地址库管理平台
STANDARD ADDRESS DATABASE MANAGEMENT PLATFORM

平台依据公安部地址标准规范，提供非标地址治理、地址管理、地址资源服务及地址生命周期管理等。

According to the nine-level address standards of the Ministry of Public Security, the platform provides the non-standard address governance, address management, address resource service and address life cycle management.

电子沙盘
ELECTRONIC SAND TABLE

通过对全域多类型数据空间进行治理、融合应用，实现态势感知、分析研判，以二三维标绘、推演支撑治安联动、应急处突、大型活动安保等实战场景。

Electronic sand table realizes situation awareness, study and judgment through the governance and integration of multi-type data space in the whole domain. Through two or three-dimensional plotting and deducing, it supports public security linkage, emergency response, security for large events and other combat scenes.

1:2000数据
1:2000 DATA

1: 2000数据鲜活、精细程度高，其数据拓扑关系及属性信息可支撑各种算法分析，帮助行业解决数据痛点，满足实战应用需要。1:2000 data is rich and detailed with fresh data and high precision. It's data topology and attribute information supports various algorithm analysis in order to help the industry solve data pain point and meet practical application needs.



智慧交通

INTELLIGENT TRANSPORTATION

交通行业“一张图”
GEOGRAPHIC INFORMATION SYSTEM FOR TRANSPORTATION

面向省交通运输厅打造的高精度地理信息平台，支撑高精三维可视化、基础设施数字化、车道级运行监测、交通仿真等应用。

Geographic information system for transportation is a high-precision geographic information platform for provincial communications department. It supports high-precision three-dimensional visualization, infrastructure digitization, lane level operation monitoring, traffic simulation and other business applications.

车辆大数据分析平台
FLEET MANAGEMENT BIG DATA PLATFORM

面向车辆运营管理企事业单位开发的集车辆实时监控、主动安全保障、围栏监控管理、车辆运营分析于一体的车辆监管分析平台。

Fleet management big data platform is a vehicle supervision and analysis platform developed by Cennavi for vehicle operation management enterprises and institutions, which integrates vehicle real-time monitor, active security, fence monitor and management, and vehicle operation analysis, giving full play to its advantages in map and big data analysis.

全国主要城市道路网密度监测平台

ROAD NETWORK DENSITY MONITORING PLATFORM OF MAJOR CITIES IN CHINA

提供108个城市的不同空间粒度的路网密度监测、城市间横向对比及年度报告生成等功能，帮助城市规划管理部门实现数据可管理、指标可监测、规划可控制。

The monitoring platform provides functions such as road network density monitoring of 108 cities with different spatial granularity, horizontal comparison between cities, and annual report generation, and helps urban planning administration to realize data manageability, index monitoring, and controlled planning.

智慧高速监管与服务方案
INTELLIGENT EXPRESSWAY REGULATION AND SERVICE SOLUTION

面向高速集团、高速交警等机构，提供高精度数字化监测、综合研判分析、应急指挥调度、智能养护管理、伴随式公众出行服务及智慧隧道、V2X等创新特色应用。

The intelligent expressway regulation and service solution is oriented to the high-speed group, high-speed traffic police and other regulatory service institutions, provides high-precision digital monitoring, comprehensive judgment analysis, emergency command and dispatch, intelligent maintenance and management, accompanying public travel service, smart tunnel, V2X and other innovation special applications.

V2X解决方案
V2X SOLUTION

提供高精度地图、高精度定位、数字孪生引擎、自动驾驶仿真平台等能力，助力交通管理部1建设智能交通监管体系，提升交通运行安全与效率，并满足公众出行服务需求。

Based on the capabilities of high-precision map, high-precision location, digital twin engine and autonomous driving simulation platform, V2X solution helps traffic management departments to build an intelligent transportation supervision system, improve the safety and efficiency of traffic operation, and meet the public travel service demand.

智慧交警

SMART TRAFFIC POLICE

交管大数据平台
TRAFFIC POLICE BIG DATA PLATFORM

紧密落实“情、指、勤、督、宣”新型勤务改革机制，提供集道路安全预防、道路拥堵治理、信控评价、可视一体化指挥调度、智慧出行诱导于一体的产品方案。

Closely implements the new service reform mechanism of "situation, guidance, diligence, supervision and publicity", the traffic police big data platform provides a product proposal integrating road safety prevention, road congestion management, information control evaluation, visual integrated command and dispatch, and intelligent mobility.

道路安全风险地图
ROAD SECURITY RISK MAP

融合道路结构、气象、事故、事件等多源数据，实现路况结构画像分析、道路风险点分析识别、实时风险监测预警、未来风险预测、道路风险精准治理等。

Road security risk map product, integrating road structure, meteorology, accidents, events and other multi-source data, realizes road condition structure image analysis, road risk point analysis and identification, real-time risk monitoring and early warning, future risk prediction, accurate and auxiliary control of road risk.

全息路口
HOLOGRAPHIC INTERSECTION VISUALIZATION SYSTEM

依托路口高精度地图和车辆高精轨迹数据，实现路口上帝视角、路口信控评价、路口安全评价、路口渠化诊断等功能，提高路口通行效率与路口通行安全性。

Holographic intersection visualization system rely on high-precision map and vehicle trajectory data, implement the functions such as intersection god-like perspective, intersection information control evaluation and intersection safety evaluation, intersection channelized diagnosis, and help traffic police to improve the traffic efficiency and safety operation.

交通运行指数监测分析平台
TRAFFIC OPERATION INDEX MONITORING AND ANALYSIS PLATFORM

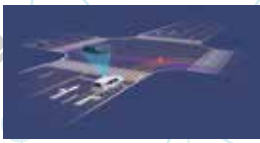
在相关国标基础上进行指标创新，采用复合拥堵评价指标，提供全国主要城市及高速公路网多维度的综合运行监测研判。

Innovating indicators on the basis of relevant national standards, the traffic operation index platform uses composite congestion evaluation indicators to provides multi-dimensional comprehensive operation monitoring judge of major cities and highway system in China.

交通流溯源分析平台
TRAFFIC FLOW TRACEABILITY ANALYSIS SYSTEM

基于车辆的轨迹数据，对经常性拥堵道路或重点关注道路进行车辆的来源、去向分析及路径选择分析等，辅助实现拥堵源头治理。

Basing on the trajectory data of vehicles, the traffic flow traceability analysis system analyze the source and destination of vehicles on frequently congested roads or roads with special attention, as well as the path selection analysis of vehicles between regions, which assists to realize the tackling of congestion causes.



非机动车违法治理方案

NON-MOTOR VEHICLE ILLEGAL GOVERNANCE SOLUTION

执法管理系统包括违法抓拍、违法取证登记、现场执法、在线执法四部分，主要服务于电动自行车、三轮车违法的全周期管理。

The non-motor vehicle illegal governance program includes four parts: illegal capture, illegal forensics registration, on-site law enforcement and online law enforcement, and mainly serves the whole cycle of the illegal management of electric bicycles and tricycles.

农村道路交通安全预防解决方案
TRAFFIC SECURITY PREVENTION SOLUTION FOR RURAL ROAD

为乡镇村道路安全防控提供软硬件产品，主要提供非信号灯路口来车提醒、事件特征分析、安全管控辅助决策等服务。

Provide hardware and software products for the prevention and control of road safety in villages and towns, mainly including services such as vehicle reminder at non-signal intersection, analysis of event characteristics, and auxiliary decision-making of safety control.

车载产品

PRODUCTS OF AUTOMOTIVE INDUSTRY

实时交通信息
REAL-TIME TRAFFIC INFORMATION

覆盖全国360+城市及港澳地区，其中150+车规级城市，支持全球多种技术标准，可实现1分钟快速更新。

Traffic information covers more than 360 cities in China and Hong Kong, Macao regions, including more than 150 vehicle regulation level cities, which can support various of global technical standards and implement quick update in one minute.

道路天气
ROAD WEATHER

提前获知由天气造成的积水、降雪、湿滑、能见度低等不利路况并向车主发布，支持天气信息分钟级更新和1km*1km、3km*3km不同粒度的网格发布要求。

The road weather system obtains the adverse road conditions caused by weather, such as water accumulation, snow, slippery, low visibility, and releases them to the car owners. The weather information can be updated every minute, and meet the grid release requirements of 1km * 1km and 3km * 3km with different granularity.

交通事件
TRAFFIC INCIDENT

预警拥堵、事故、占道、施工、封路等事件类型，支持1分钟快速更新。

Traffic incident gives early warning of congestion, accidents, road occupation events, construction, road sealing and other events. It supports quick update in one minute.

分车道方向路况
ROAD CONDITIONS IN LANE DIRECTION

提供车道级路况服务，路况信息覆盖10000个全国封闭道路路口。

Road conditions in lane direction provides lane-level road condition information service and covers 10000 closed junctions in China.

路况预测
ROAD CONDITION FORECAST

可在出行前预判未来整体交通状况，实时更新行程中周边路况变化趋势，覆盖360+城市。

The road condition forecast can predict the overall traffic conditions before the travel and update the trend of the surrounding road conditions in real time, which covers more than 360 cities.

历史交通信息
HISTORICAL TRAFFIC INFORMATION

提供指定路段或位置7*24小时的历史平均行车速度值，覆盖360+城市。

The historical traffic information provides 7 * 24-hour historical average speed values of specified sections or locations, covering more than 360 cities.

城市车牌尾号限行
TRAFFIC RESTRICTIONS BASED ON THE LAST DIGIT OF LICENSE PLATE NUMBERS IN CITY

预警并规划绕行路径，监测范围覆盖国内60+执行限行政策城市。

It gives early warning when it is near the restricted region and plan the detour path during driving. The monitoring range covers more than 60 cities in China that implement the traffic restriction policy.

简易图形
SIMPLE GRAPHIC

提供实时交通流、限行和事件信息等简易图形信息，覆盖全国76个城市快速路和三大经济圈城际高速。

Simple graphic provides graphic information covering real-time traffic flow, traffic restrictions and event information, which covers expressways in 76 cities and intercity expressways in three economic circles.

